

# ENERGYWISE



YOUR SAN MIGUEL POWER MEMBER NEWSLETTER



## CONTACT INFORMATION

**Nucla**  
170 W. 10th Ave.  
P.O. Box 817  
Nucla, CO 81424  
(970) 864-7311  
Toll Free: 1-877-864-7311

**Ridgway**  
720 N. Railroad St.  
P.O. Box 1150  
Ridgway, CO 81432  
(970) 626-5549  
Toll Free: 1-800-864-7256

**Both Offices Open:**  
M - TH, 7:00 a.m. - 5:30 p.m.

[www.smpa.com](http://www.smpa.com)  
[www.facebook.com/SanMiguelPower](https://www.facebook.com/SanMiguelPower)

In the event of a power outage,  
contact your local SMPA office to  
reach our 24-hour dispatch.

## QUESTIONS OR COMMENTS

[energywise@smpa.com](mailto:energywise@smpa.com)  
(970) 626-5549 x212

## SAFETY TIPS

### IT'S COOLING OFF OUT THERE!

- ✓ Safely store warm weather tools like lawn mowers and trimmers.
- ✓ Check cold weather tools, such as leaf and snow blowers, along with their power cords, for unusual wear and tear.
- ✓ Repair or replace worn tools or parts right away.

San Miguel Power Association is an equal opportunity provider and employer. In accordance with Federal civil rights law and U.S. Department of Agriculture (USDA) civil rights regulations and policies, the USDA, its Agencies, offices, and employees, and institutions participating in or administering USDA programs are prohibited from discriminating based on race, color, national origin, religion, sex, gender identity (including gender expression), sexual orientation, disability, age, marital status, family/parental status, income derived from a public assistance program, political beliefs, or reprisal or retaliation for prior civil rights activity, in any program or activity conducted or funded by USDA (not all bases apply to all programs). Remedies and complaint filing deadlines vary by program or incident.

Person with disabilities who require alternative means of communication for program information (e.g., Braille, large print, audiotape, American Sign Language, etc.) should contact the responsible Agency or USDA's TARGET Center at (202)720-2600 (voice and TTY) or contact USDA through the Federal Relay Service at (800)877-8339. Additionally, program information may be made available in languages other than English.

To file a program discrimination complaint, complete the USDA Program Discrimination Complaint Form, AD-3027, found online at [http://www.ascr.usda.gov/complaint\\_filing\\_cust.html](http://www.ascr.usda.gov/complaint_filing_cust.html) and at any USDA office or write a letter addressed to USDA and provide in the letter all of the information requested in the form. To request a copy of the complaint form, call

(866) 632-9992. Submit your completed form or letter to USDA by:

- (1) mail: U.S. Department of Agriculture  
Office of the Assistant Secretary for Civil Rights  
1400 Independence Avenue, SW  
Washington, D.C. 20250-9410;
- (2) fax: (202) 690-7442; or
- (3) email: [program.intakeusda.gov](mailto:program.intakeusda.gov).

USDA is an equal opportunity provider, employer, and lender.

## It's Okay to be an Energy Geek

**IT'S HAPPENED TO EVERYBODY. YOU'RE CHIT-CHATTING AT A SOCIAL ENGAGEMENT AND SOMEONE FINALLY BRINGS UP A TOPIC YOU REALLY LOVE. YOU START SHARING YOUR VIEWS AND BEFORE YOU KNOW IT, YOU SEE YOUR FELLOW GUESTS' EYES BEGINNING TO GLAZE OVER. "UH OH," YOU THINK. "NOW THEY KNOW I'M A GEEK!"**

Don't worry. We happen to love geeks—especially those of you interested in energy economy. And we have a tool that we think you'll love almost as much as your compost thermometer and your home weather station. It's called SmartHub.

If you have been lucky enough to see our media blitz on this you're now keenly aware that SmartHub is a quick, convenient way to pay your bill, but did you know that it's also a robust analysis tool that can help you find how you are consuming your electricity or selling back your renewable energy? Well, roll up your sleeves (and your pant legs, if you must) and log in to SmartHub. (See instructions at [www.smpa.com](http://www.smpa.com).)



power in your hands.



### Once you're in, you'll see that you can:

- ✓ See your monthly, daily, and even hourly use data
- ✓ Check your current unbilled usage for budgeting or planning
- ✓ Compare detailed use data from this month to the same period last year
- ✓ Observe the seasonal changes in your solar system output and how they track with your consumption patterns

Whether from your laptop or smartphone app, SmartHub can help you make informed decisions on how and when you use your electricity. Dig deeper, mess around with it, even download the data if you want to massage it or store it elsewhere.

Ultimately, you can use SmartHub data to help you take control of your electrical energy use that can help reduce your carbon footprint and your power bill. That's something even your non-geeky friends can appreciate!



*I love the new interface. It's easy to use and super-helpful!*  
—APRIL BJERK

“ *This is a huge upgrade. That we have the ability to change the accounts without filling in any forms is a tremendous improvement.* ”  
—CATHY FREELS, ASAP ACCOUNTING

# Ridgway's Grassroots Effort Is Working To Preserve Our Starry Dark Skies

HERE IN SOUTHWEST COLORADO WE ARE FORTUNATE TO HAVE AN AWE-INSPIRING STARRY NIGHT SKY. WITH THIS IN MIND, LOCAL CITIZENS HAVE BEEN VOLUNTEERING THEIR TIME WORKING TO OBTAIN AN OFFICIAL "DARK SKY TOWN" DESIGNATION FOR RIDGWAY FROM THE INTERNATIONAL DARK SKY ASSOCIATION.

Several SMPA employees, including Key Accounts Manager, Paul Hora and Energy Services Technician, Terry Schuyler have also been volunteering their time in this endeavor. As Hora explains: "SMPA is a community focused organization and when there is an undeniable opportunity to support issues that benefit everyone we are onboard to help in any way we can. When a place is officially recognized as having a valuable natural resource, it helps to protect that resource. The dark sky in our service territory is some of the best in the country. If we can

help preserve it, then we are helping not only the current members but the future ones as well. That makes a lot of sense to us".

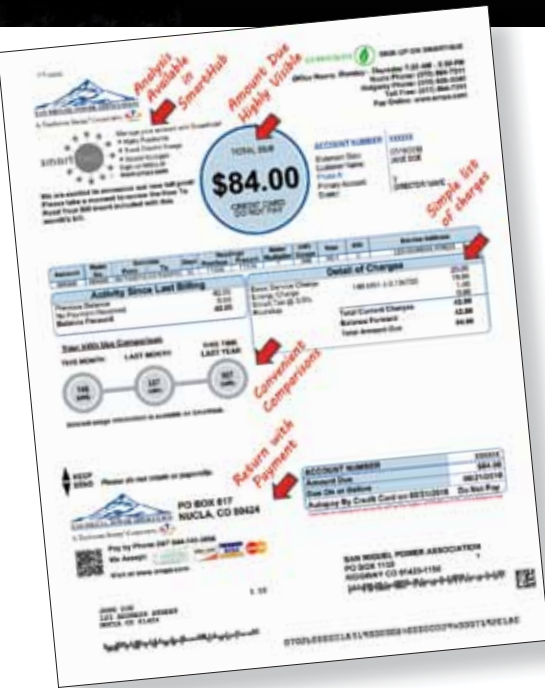
The Ridgway Dark Sky Committee is led by Val Szwarc and Dave Jones.

"We appreciate how SMPA has been working in many ways to preserve our dark skies", says Szwarc. "They have been assisting customers to retro-fit light bulbs and fixtures for improved efficiency and reduced outdoor light pollution. SMPA has also been a leader in helping educate the public

with simple tips anyone can do like; shielding bulbs to prevent glare, using 3000 degrees Kelvin or less (soft white) bulbs, and not over-illuminating. We are encouraged by the support for dark skies that we are seeing from local residents, businesses, The Town of Ridgway and visitors. Ridgway's dark starry sky is an amazingly beautiful resource worth protecting".

**Don't miss the Star Party!**

- ◆ Saturday, September 29<sup>th</sup>
- ◆ Ridgway State Park Visitor Center
- ◆ Presentations 7:00pm
- ◆ Telescope viewing 8:00pm



## Why Does the Bill Look Different?

San Miguel Power's conversion to a new Customer Information System has affected almost every aspect of our business, including billing. We have designed the new bill with certain improvements over the old ones. Notably, you will be able to quickly see your balance due and account status. Also, the paper bill is designed to compliment our new online customer care portal, SmartHub. For more detail, see [www.smpa.com/content/understanding-your-bill](http://www.smpa.com/content/understanding-your-bill). You can turn off your paper bill in SmartHub.

## Hunt Safely Near Power Lines

The clearings created by utility rights of way can lure game and hunters into a dangerous spot. Always be aware of what's behind your target, and keep electrical lines and equipment out of your sights!



Come join us at... Celebrating National Cooperative Month!

# SMIPA's Member Appreciation Days

Gifts! Food! Hot Beverages!

**October 1<sup>st</sup>**  
8 AM to 4:30 PM

- Nucla Office  
170 W. 10<sup>th</sup> Avenue
- Ridgway Office  
720 N. Railroad Street

**Whoops!**

The newsletter was incorrect. Member Appreciation Days actually ends on October 2<sup>nd</sup>. Our offices are closed on October 3<sup>rd</sup>. Normal business resumes on October 4<sup>th</sup>. We hope to see you on Monday or Tuesday!

...and you can still WIN the Radmini!  
If you sign into SMPA's SmartHub before Oct. 1<sup>st</sup>, you are entered into the drawing!

SAN MIGUEL POWER ASSOCIATION  
A Touchstone Energy® Cooperative

Concerned about our environment?  
Learn how you can go...

Call 970-626-5549 ext. 212

# SMIPA POWER PLAY

**This Month's Puzzle: ICE EICH SLEEC TRVL**

**Hint: Not every co-op offers rebates for these, but we do.**

**SUBMIT YOUR ANSWER** and be entered into a drawing for a fun prize to:

**EnergyWise**  
PO Box 1150  
Ridgway, CO 81432

Last month's Scramble Answer: **SEETREJAV O9**

**Sharing Success**

Economic Development Grants Available!  
[phora@smpa.com](mailto:phora@smpa.com)